

CELL :- Oil pump    CELL NAME:- A336 Body    MACHINE / STAGE :- Brother 01    OPERATION :-Reaming

**KAIZEN THEME** -To Avoid A336 Body Dowel hole shift

**IDEA :-** Poka yoke to be implemented as Pin to be added in fixture to avoid wrong loading .

**WIDELY/DEEPLY:-**

**COUNTERMEASURE :** 1)Poka yoke to be implemented as Pin to be added in fixture to avoid wrong loading .2) Training given to operator .

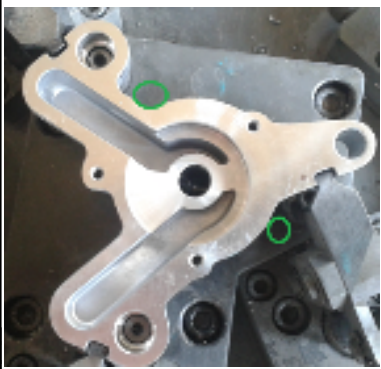
<b>BENCHMARK</b>	10 No.
<b>TARGET</b>	0 No.
<b>KAIZEN START</b>	17.01.2015
<b>KAIZEN FINISH</b>	

**PROBLEM / PRESENT STATUS** -A336 Body Dowel hole shift .

**TEAM MEMBERS :-**  
Umesh Pimple , Vijay walung ,Ganesh , Nitin Sutar.  
**BENEFITS :-**



BEFORE



AFTER

1. Prevent Re-occurrence of Customer Complaint.
2. Reduce COPQ.

**WHY - WHY ANALYSIS :-**  
**Why 1** - A336 Body Dowel hole shift .  
**Why 2** - Part can wrong load in current process .  
**Why 3** - Poka

**RESULT :-**

Currently 100 %  
checking .& Monitoring  
started

**KAIZEN SUSTENANCE**

**WHAT TO DO-** Check Point added in Sustenance check sheet  
**HOW TO DO:** By Audit  
**FREQUENCY :** Alternate date

**ROOT CAUSE-** Poka

**COST INCURRED FOR MAKING KAIZEN**

MATERIAL COST IN RS	LABOUR COST IN RS	TOTAL COST IN RS
-----	-----	-----

**REGISTRATION NO. & DATE:-** 17.01.2015

**SCOPE & PLAN FOR HORIZONTAL DEPLOYMEN**

**REGISTERED BY :-** Ganesh Padwalkar

SR. NO.	CELL	TARGET	RESPONSIBILITY	STATUS
--1-	-----	-----	-----	-----

**MANAGER'S SIGN :-** Sunil kinkar